

GIFAS
ELECTRIC





Small white label with illegible text, possibly a manufacturer's or installer's mark.



1.33

GIFAS-ELECTRIC

GIFAS-ELECTRIC
ADRESSE: 2,7900 BR LÉOGANS 2000 RI
TÉLÉPHONE: 95514 FAX: 9550428-1/4
AUTRES: 274312/00021 2091(13) 05-28
P. 400VAC 2N



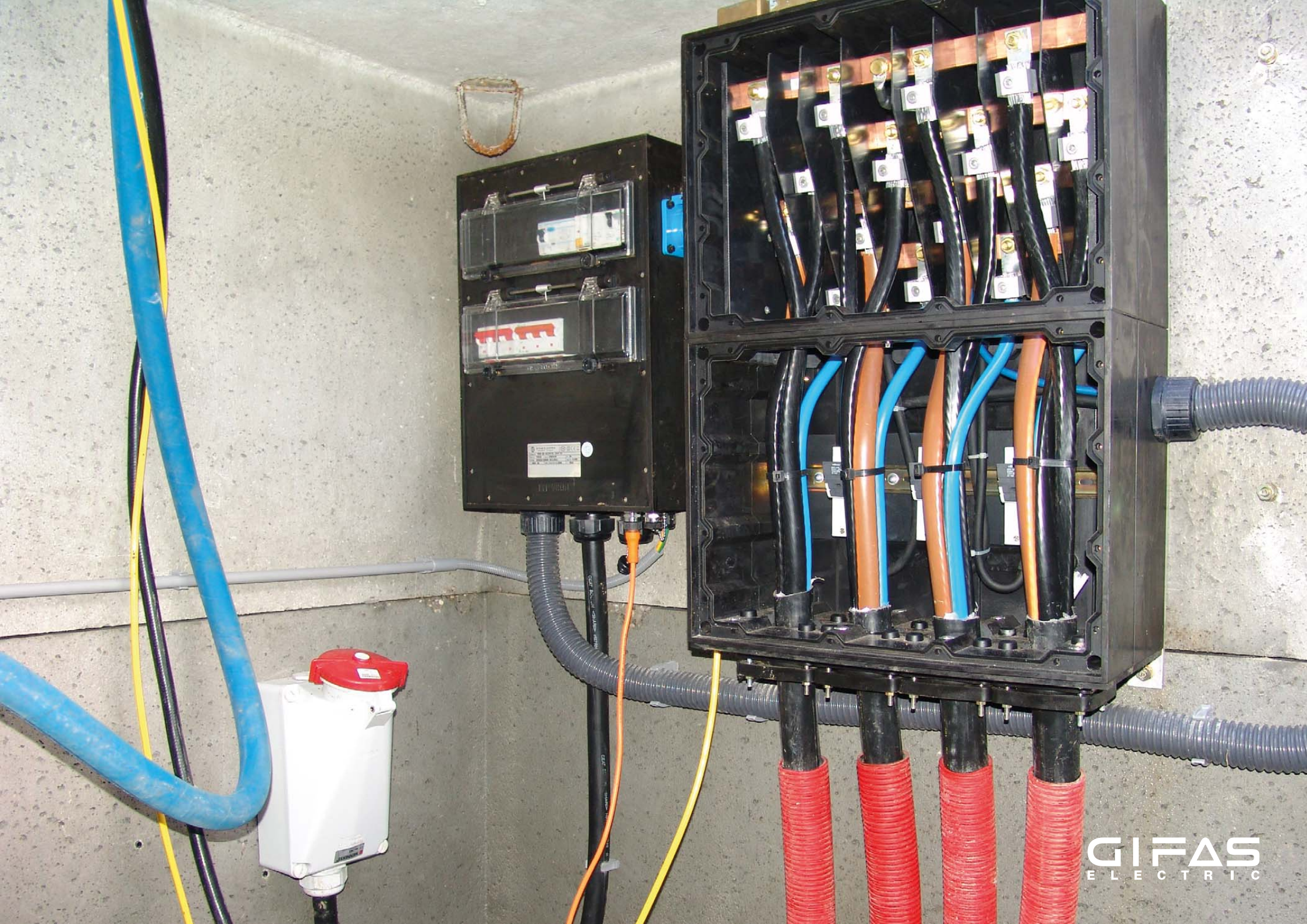
Label on the top right of the cabinet, partially obscured and difficult to read.

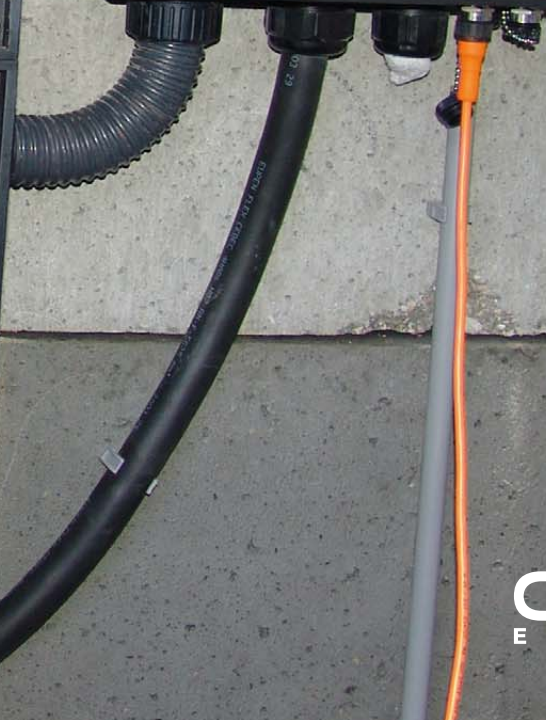
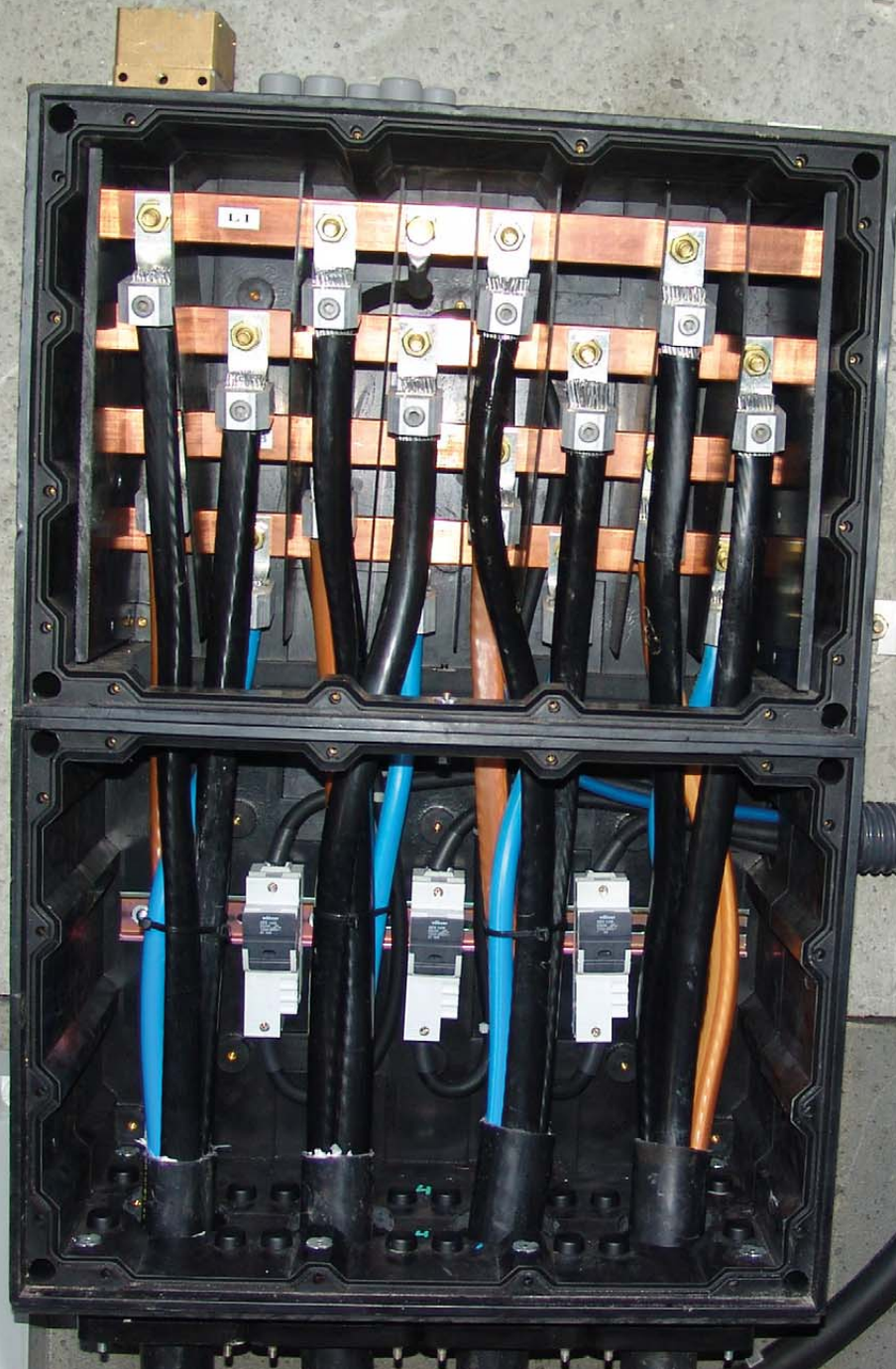


L2

GIFAS ELECTRIC
Company 1900 DE L'ESPLANADE 3007 21
62004
Téléphone 32484314 - 14
Fax 326444 00062 005 044 24 87
400VDC 3A

GIFAS
ELECTRIC



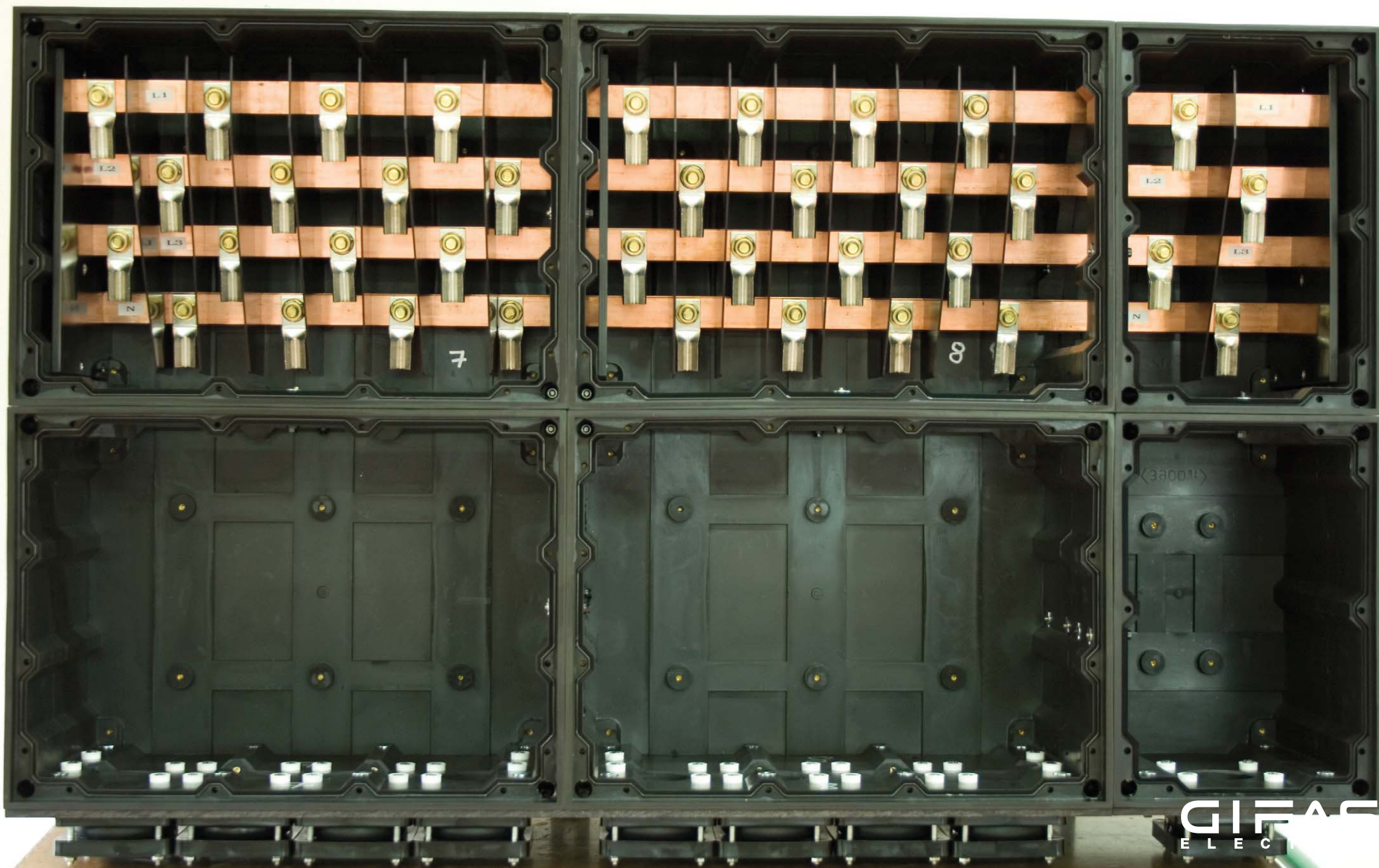






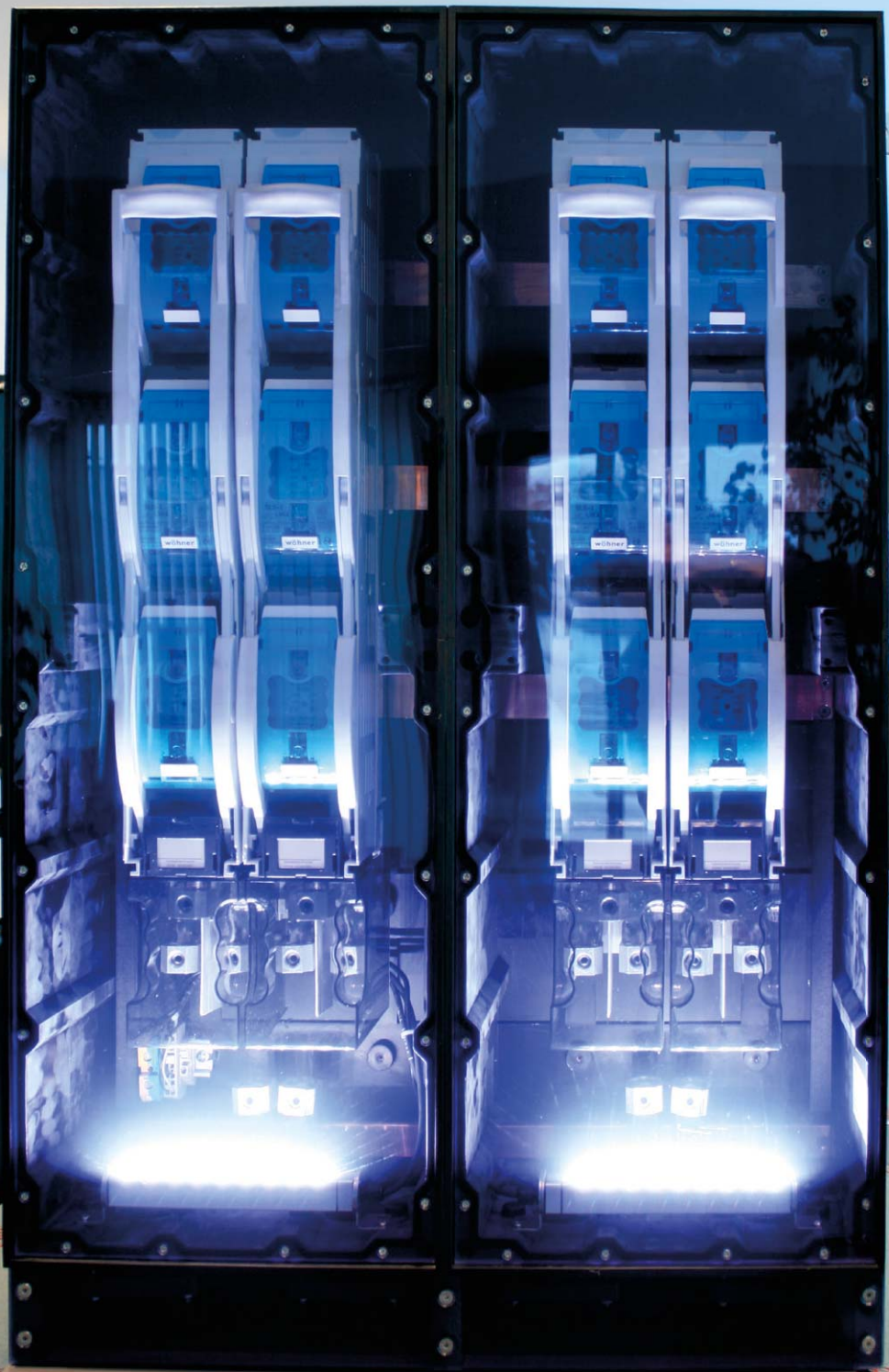


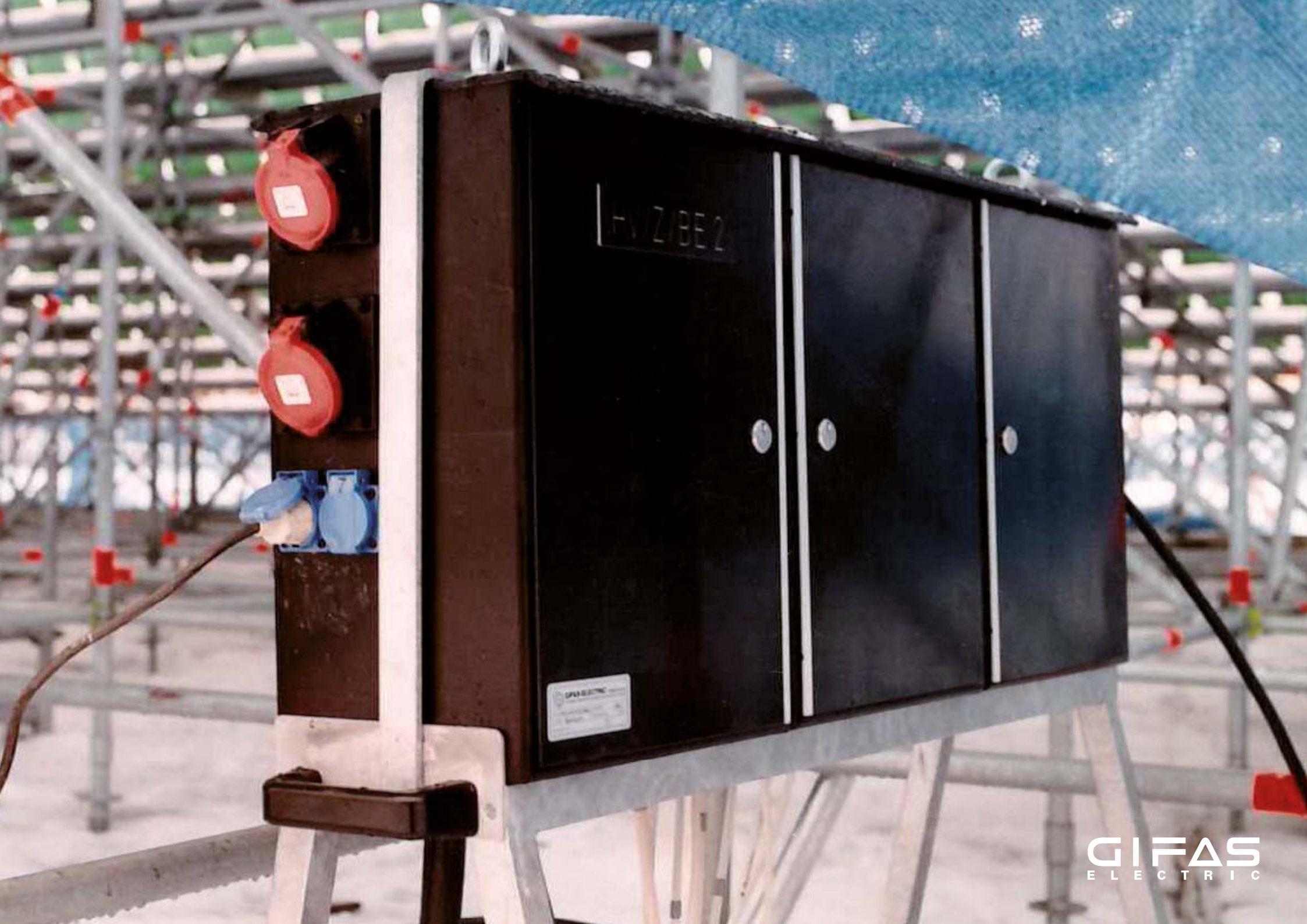












HV ZIBE 2

SPARE PARTS

HV/K/SPK

GENERAL ELECTRIC



GIFA5
ELECTRIC



BERG
St. Jo





Doppelmayr
Konstruktion
A-6922 Welfart, Vorarlberg, Austria

Österreichische
AEG-TELEFUNKEN
Elektrische Anlagentechnik

GIFAS
ELECTRIC







GIFAS
ELECTRIC







GIFAS
ELECTRIC